



## CREDIT MANAGEMENT THAT MAKES A DIFFERENCE

In business for over 30 years, BFF has a solid experience in managing the collection of receivables towards the Public Administrations and the National Healthcare system. In 2017, the BFF Group managed about 3 million accounting documents, corresponding to about 5% and total volumes of 6.6 billion euros of the Italian Public Administration trade receivables.

The **Credit Management** service is for providers in the healthcare industry and Public Administration who need a solution to the problem of payment collection.

### ▶ WHAT ARE THE ADVANTAGES OF BFF'S MANAGEMENT SERVICE?

The BFF credit management service closely monitors the **entire credit life cycle**, guaranteeing:

- internal **cost optimization**
- **decrease in collection times**
- constant **monitoring** of credit performance
- high level of **specialization**
- **a single contact point** for managing the entire exposure towards Public Administration and the national health authorities
- **cooperation** with debtors and **protection** of the relations between supplier and debtor
- **operating solutions** for disputed debts
- **best conditions** for management due to special knowledge of debtors in the PA and the health care sector

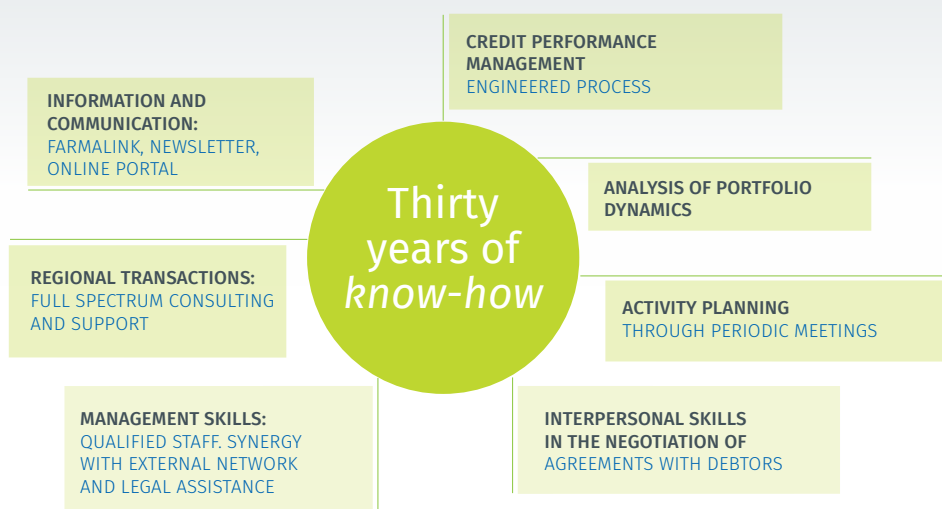
### ▶ WHAT CHARACTERIZES BFF'S MANAGEMENT SERVICE?

The service includes:

- electronic invoicing and storage, certification on MEF platform, training and updating meetings, reporting and information, reconciliation and collections

Moreover, BFF:

- has for over 30 years been a **professional contact point** for all national health sector and PA entities
- has a credit management **process** that is **flexible and adaptable** to the needs of each client, regardless of the business sector
- uses **technological data interchange platforms**: Farmalink, SmartFlowPa
- **protects** the company-client commercial relationship



▶ **WHERE DO WE OFFER THE SERVICE?** The service is offered in **Italy, Spain, Portugal, Poland, Czech Republic and Slovakia.**